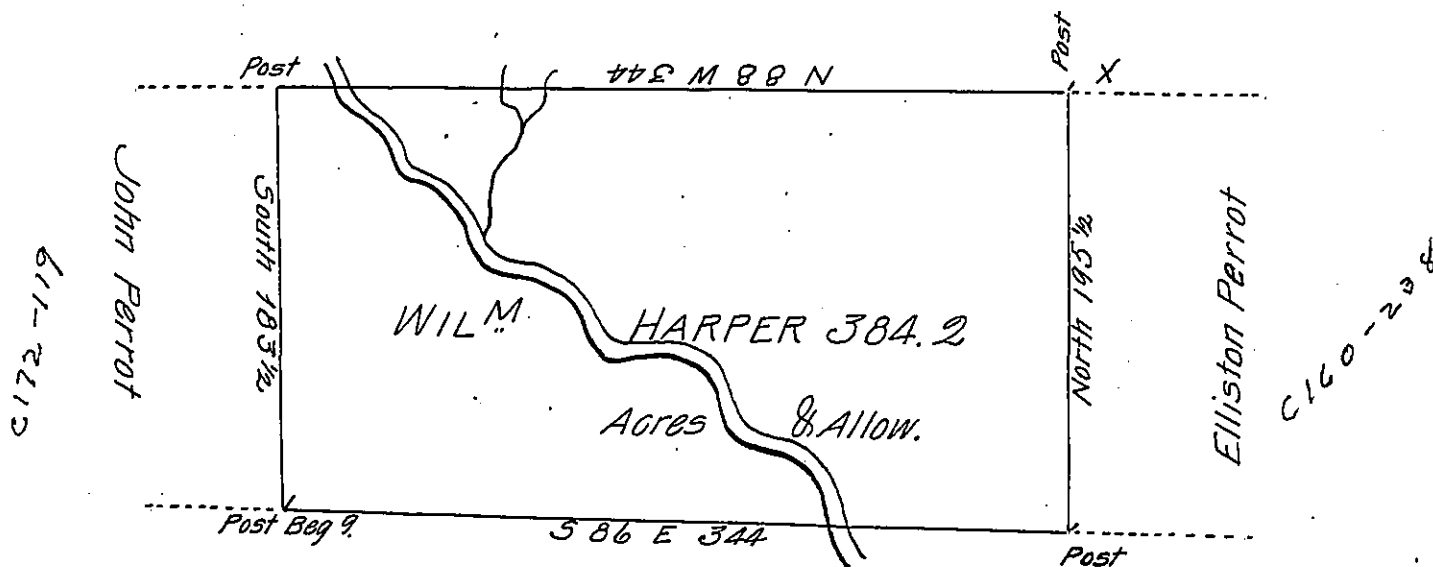


By the State of New York



Land of Pickering & Co.

The Draught of a Tract of Land called — situate on Mill Creek between Susquehanna and Tioga — adjoining the Line of the State of New York, in the County of Luzerne, containing Three hundred eighty four Acres 35 Perches with usual Allow. for Roads. Surveyd the 16th day of September Anno Dom: 1786 In Pursuance of a Warrant to William Harper dated at Philad<sup>a</sup> the Seventeenth day of May Anno Dom: 1785 N<sup>o</sup> 240.

P- Wm Maclay

To John Lukens Esq. S.G. }  
of Pennsylvania }

D.S.

IN TESTIMONY that the above is a copy of the original remaining on file in the Department of Internal Affairs of Pennsylvania, made conformably to an Act of Assembly approved the 16th day of February, 1833, I have hereunto set my Hand and caused the Seal of said Department to be affixed at Harrisburg, this tenth day of March 1905.

*Joseph P. Brown*  
Secretary of Internal Affairs.